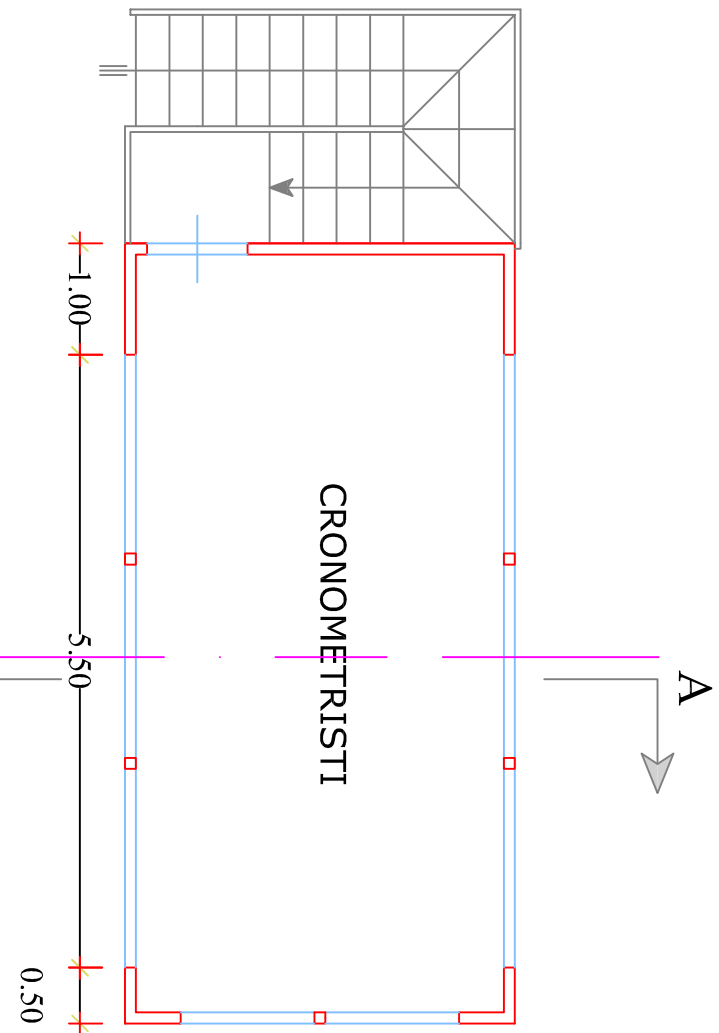
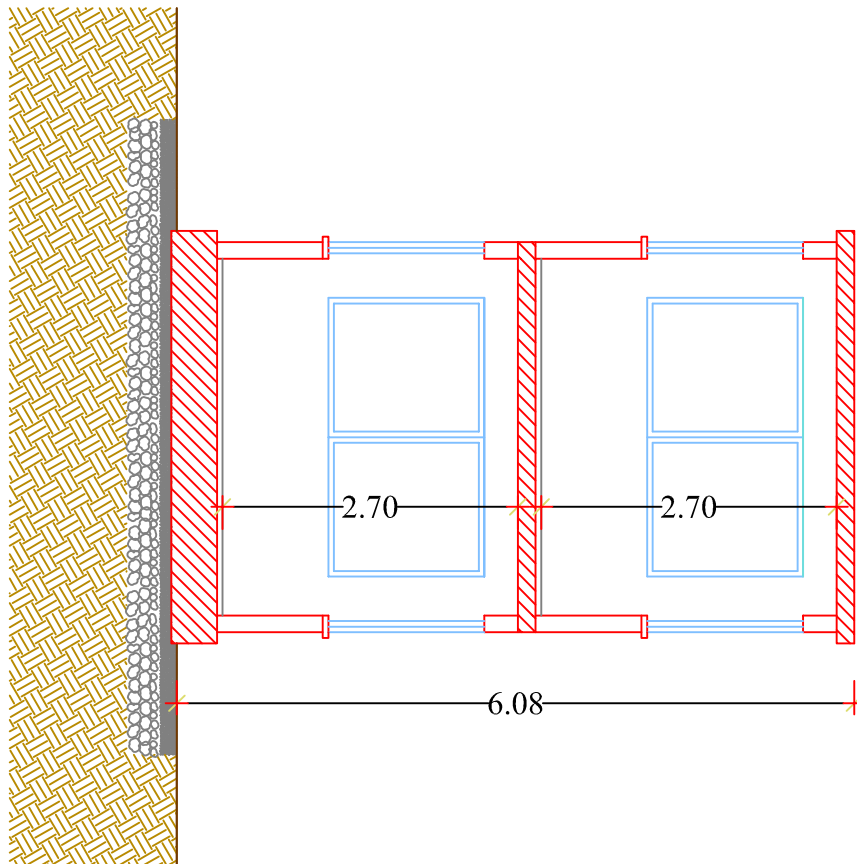
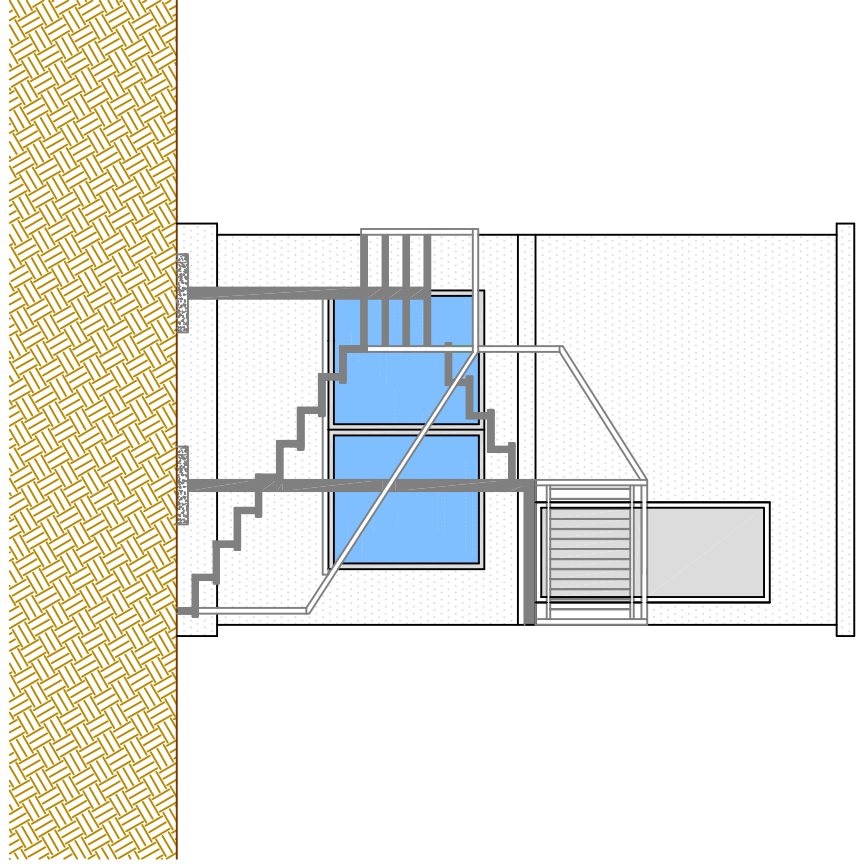
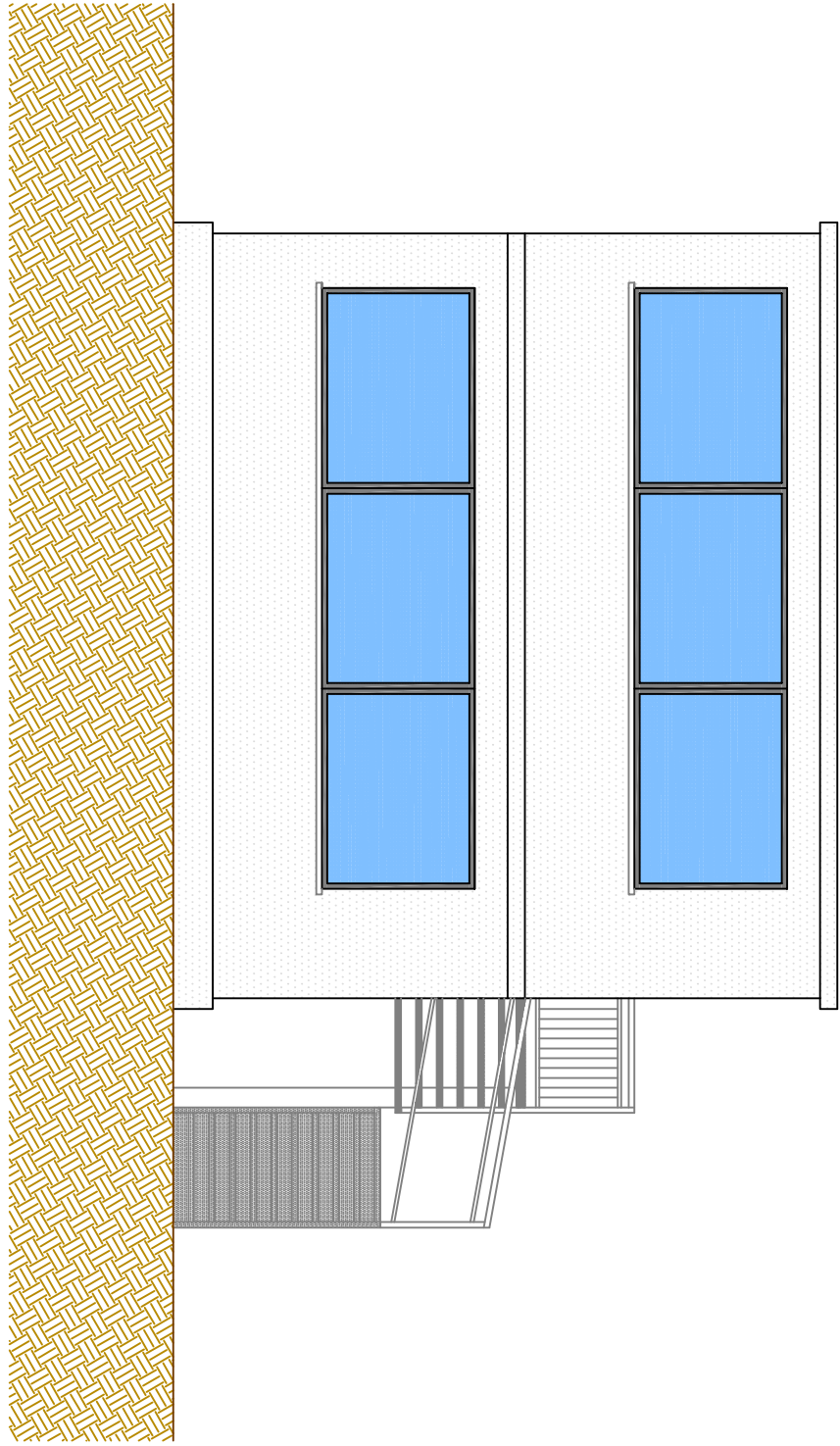
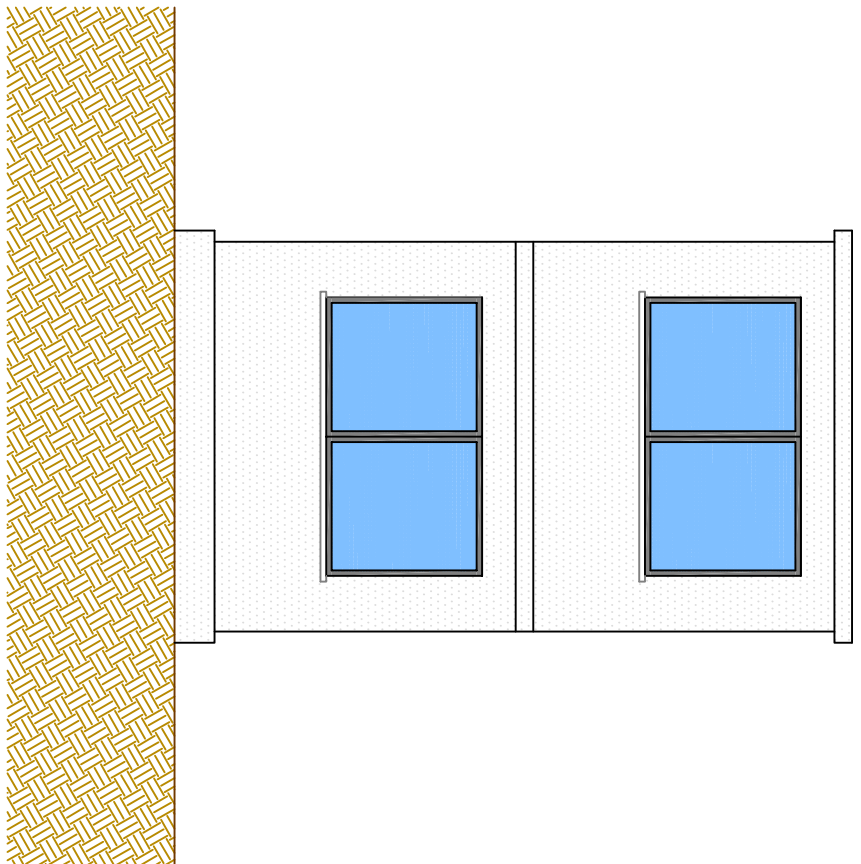
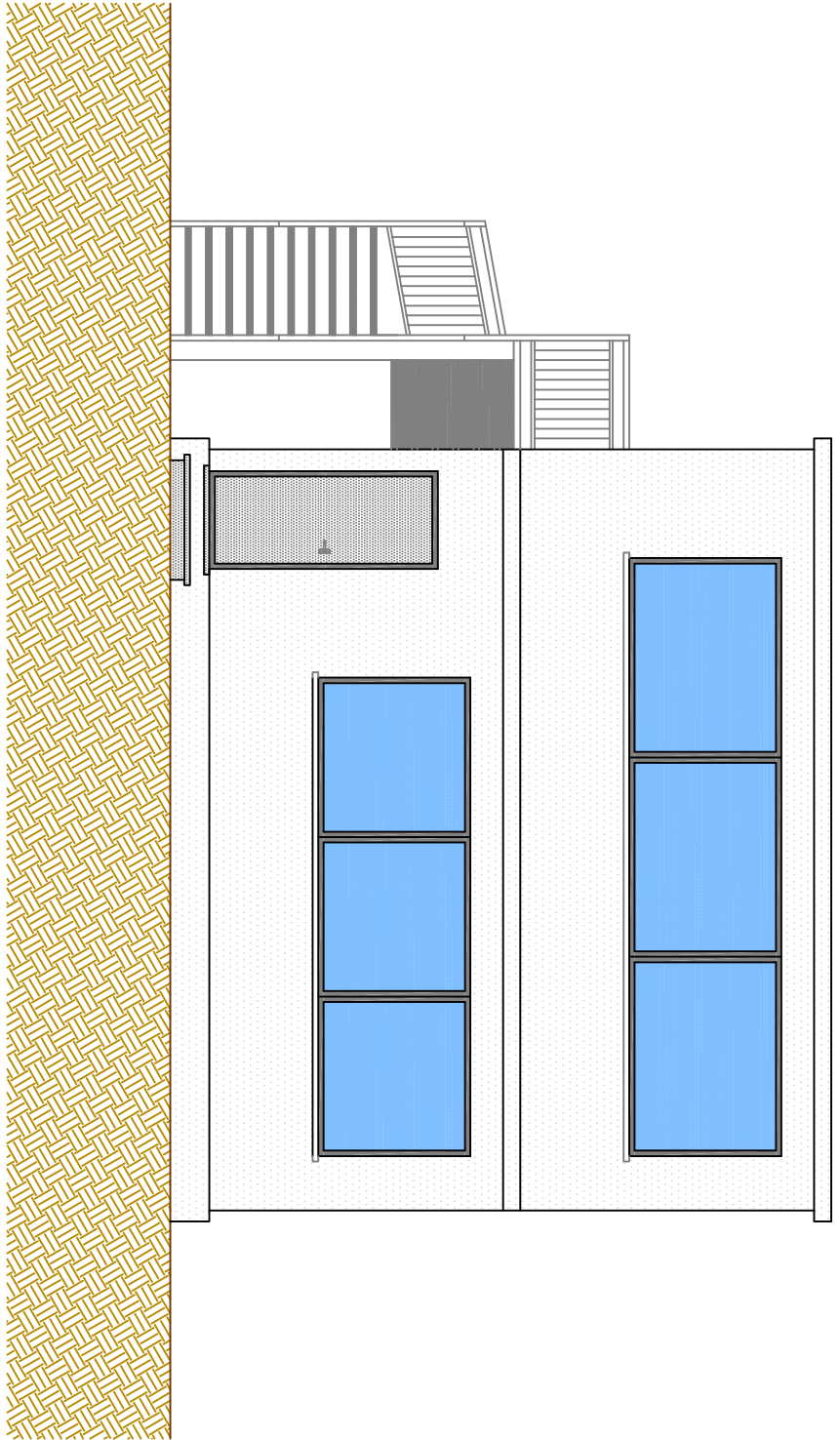


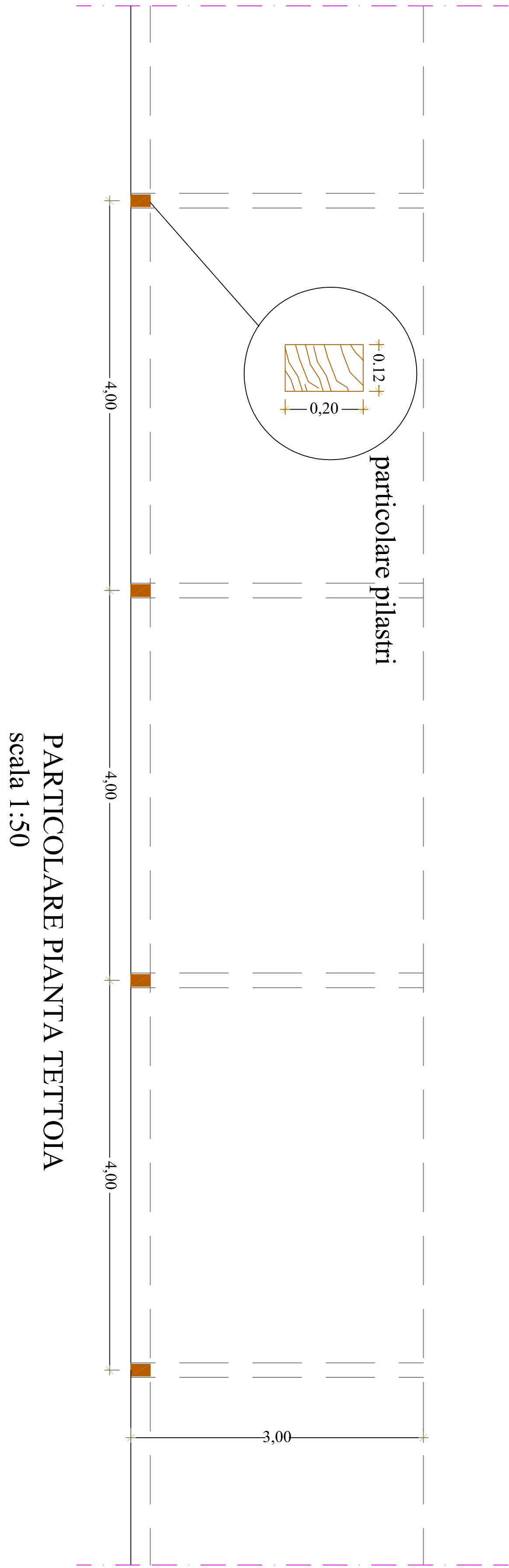
PIANO TERRA



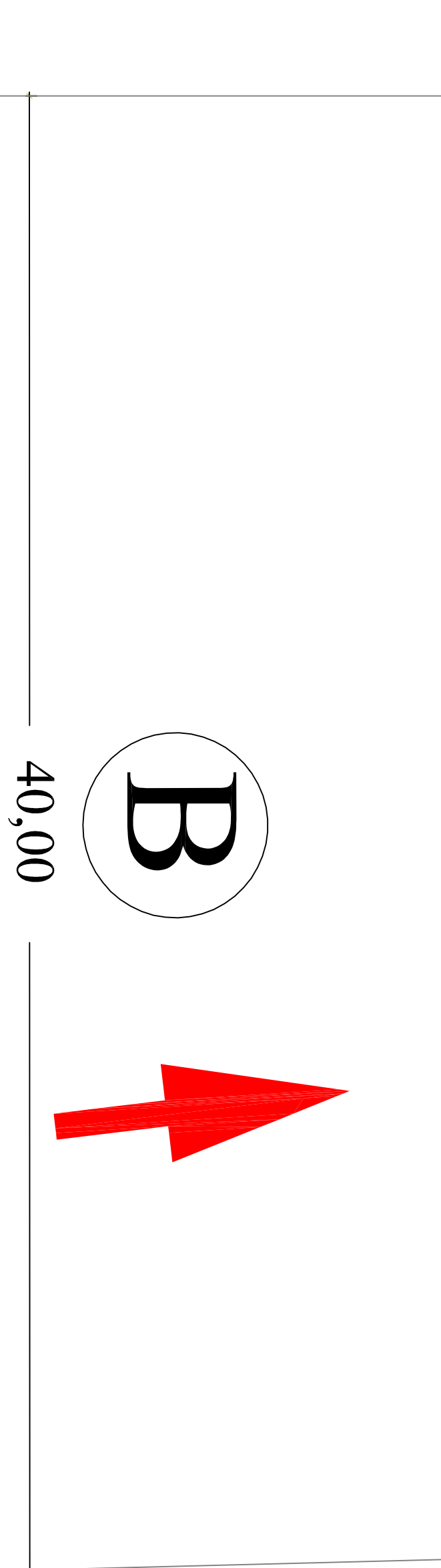
PIANO PRIMO



DIREZIONE GARA e CRONOMETRISTI
scala 1:100



TIPOLOGIA TETTOIA IN LEGNO IN PROGETTO



- PLANIMETRIA AREA PARTENZA
scala 1:200
- (A) zona di attesa coperta con tettoia in legno
 - (B) rettilineo di partenza
 - (F) servizio igienico chimico

Studio Tecnico Progettazione Consulenze
Claudio Batocchioni - geometra
Via Solotto, 7 - Magione (PG) 0734042 cell. 336830039
e-mail: postate@studiotatocchioni.com

Committente: "A.M.U.B. Magione S.p.A."
Sede: Via Santa Giuliana - Magione (PG)

Variante al progetto per la realizzazione di Impianto Sportivo da "PistaKart" a "Crosodromo" presso l'Autodromo dell'Umbria, in Magione(PG) Via S.Giuliana.

Tavola n. 4
Il Tecnico
Geom. Claudio Batocchioni
Data Febbraio 2016 Foglio 39
particella 89 Scale varie